



# Instructions

## JEEP JL - REAR SEAT DELETE 40% SUB ASSEMBLY

---

Thank you for purchasing your Rear Seat Delete from AAL! We greatly appreciate your trust in our company. We take that purchase and your commitment to us very seriously. If you have any questions along the way, please don't hesitate to give us a call at 385.202.4188.

**\*\*Please read these instructions thoroughly before starting this project.\*\***



**NOTE:** These instructions pertain to the 40% (driver side) component of the seat delete only. The two other connecting sub assemblies (the 60% seat delete and M.A.S.S. system) have their own respective instruction sheets. **Complete this assembly second** if you have purchased the 60% side and or the M.A.S.S. system.

### **Tools Required:**

There is more than one tool for every job, but below is the list of tools we use for this installation.

- 4mm Hex Key Allen Wrench
- 5mm Hex Key Allen Wrench
- 8mm Hex Key Allen Wrench
- 10mm Hex Socket or wrench

## What's included:

### **60% RSD Parts:**

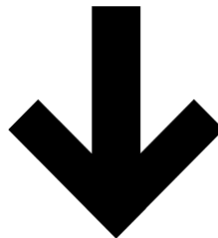
Driver Plate	1	Rear Driver Access Door Bracket	1
Front Driver Support	1	Driver Access Door Brace	1
Rear Driver Bracket	1	Rear Driver Nut Plate	1
Rear Driver Upper Bracket	1	Driver Connector Bracket	1
Front Driver Access Door	1	Driver Side Panel Bracket Mount	1
Support Rail	2	Driver Side panel	1
Driver Support Rail	1	Rear Side Panel Bracket Magnet	1
Front Driver Access Door Bracket	1	Lower Driver Bracket	1
Front Driver Nut Plate	1	V2 Seat Bracket	1
Driver Access Door Bracket	2		

### **Hardware:**

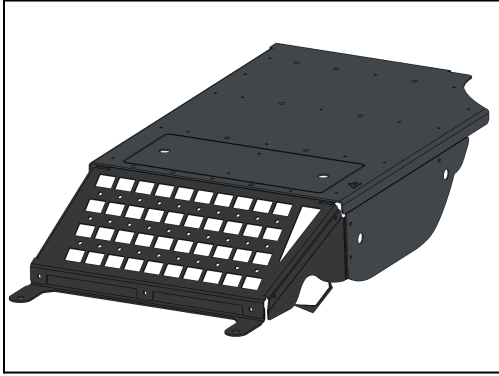
Magnet - 3/4" - Round	4	Aluminum Spacer - 12mm inner 28 outer	22
Thumb Screw Bolt - M6x12mm - 1.0 mm	3	Flat Washer - M10	2
Flat Head screws - M6x14mm - 1.0 mm	6	Button Head Bolt - M8x16mm - 1.25 mm	2
Flat Head Bolt - M6x8mm - 1.0 mm	21	Nylon Insert Nut - M8 - 1.25 mm	2
Button Head Bolt - M6x14mm - 1.0 mm	21	Button Head Bolt - M12x50 mm - 1.75 mm	2
Nylon Insert Nut - M6 - 1.00 mm	21	Flat Washer - M12	4
Hex Head Bolt - M10x50 mm - 1.50 mm	2		

## Part Overview and Prep

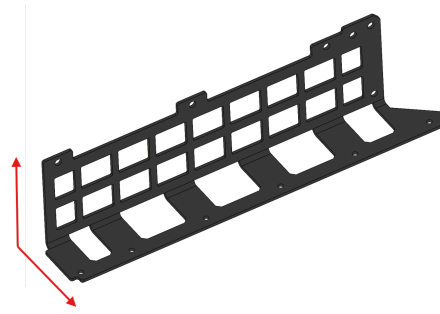
First lets review images of all the necessary parts and hardware to ensure we have everything we need for the installation process



## 40% RSD Parts:

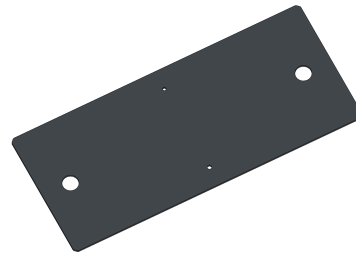


Rear Driver Upper Bracket:



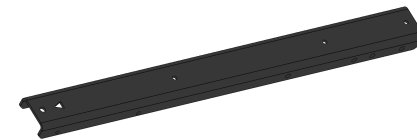
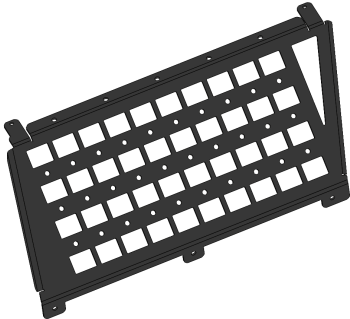
Driver Access Door:

Driver Plate:



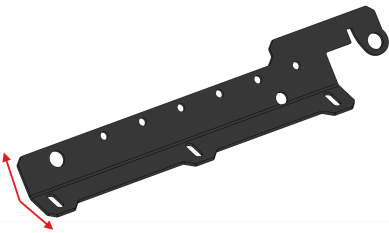
General Support Rail:

Front Driver Support:

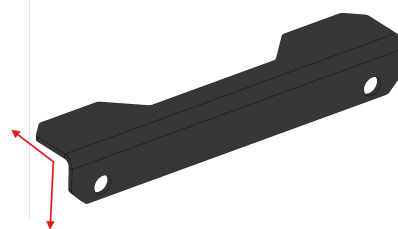


Driver Support Rail:

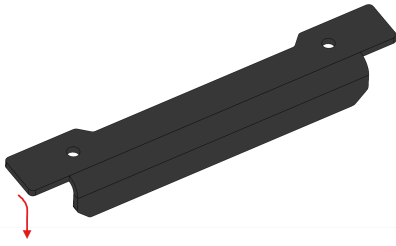
Rear Driver Bottom Bracket:



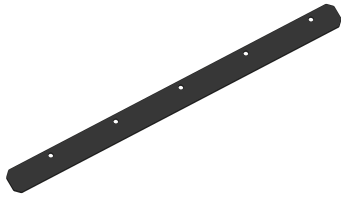
Access Door Bracket:



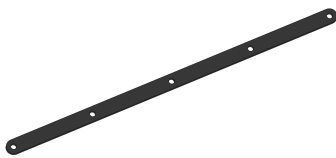
Access Door Brace:



Front Driver Access Door:



Driver Nut Plate:



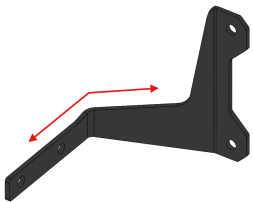
Rear Driver Access Door Bracket:



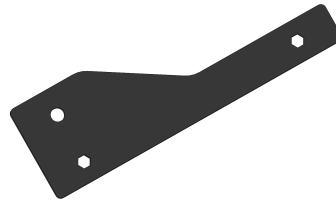
Rear Driver Nut Plate:



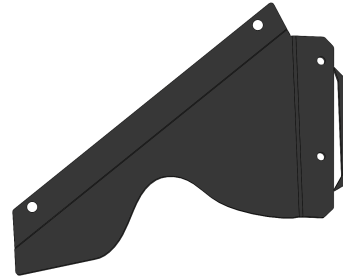
Driver Connector Bracket:



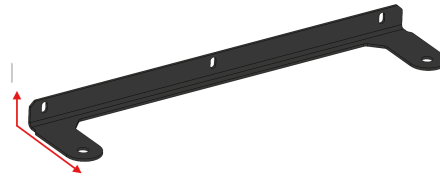
Rear Side Panel Bracket Magnet:



Driver Side Panel Bracket Mount:



Lower Driver Bracket:



Driver Side Panel:



## Hardware:

Magnet - 3/4" - Round



Thumb Screw Bolt - M6x12 mm



Flat Head Bolt - M6x14 mm



Flat Head Bolt - M6x8 mm



Button Head Bolt - M6x14 mm



Nylon Insert Hex Nut - M6



Hex Head Bolt - M10x50 mm



4 Aluminum spacer - 12mm inner - 28 outer 22



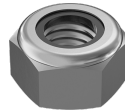
3 Flat Washer - M10 2



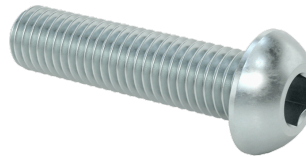
Button Head Bolt - M8x16 mm 2



6 Nylon Insert Nut - M8 2



21 Button Head Bolt - M12x50 mm 2



21 Flat Washer - M12 2



Once we've confirmed that we have everything, we can begin constructing by preparing the truck bed for installation:

i) The first step is to remove all rear floor mats, the accompanying snaps that hold them in, and the rear seats themselves. The base carpets can stay in place. The base should look completely empty

iii) The last preliminary step is to move the front driver and passenger seats forward all the way and remove the two rear **T50 Torx** anchor bolts on the passenger side front seat. Once removed, In the recess of the seat rails (see photo), place **(6) 12mm inner - 28 mm outer Aluminum spacers** for each seat bolt. These are necessary for proper fitting of the mounting brackets.

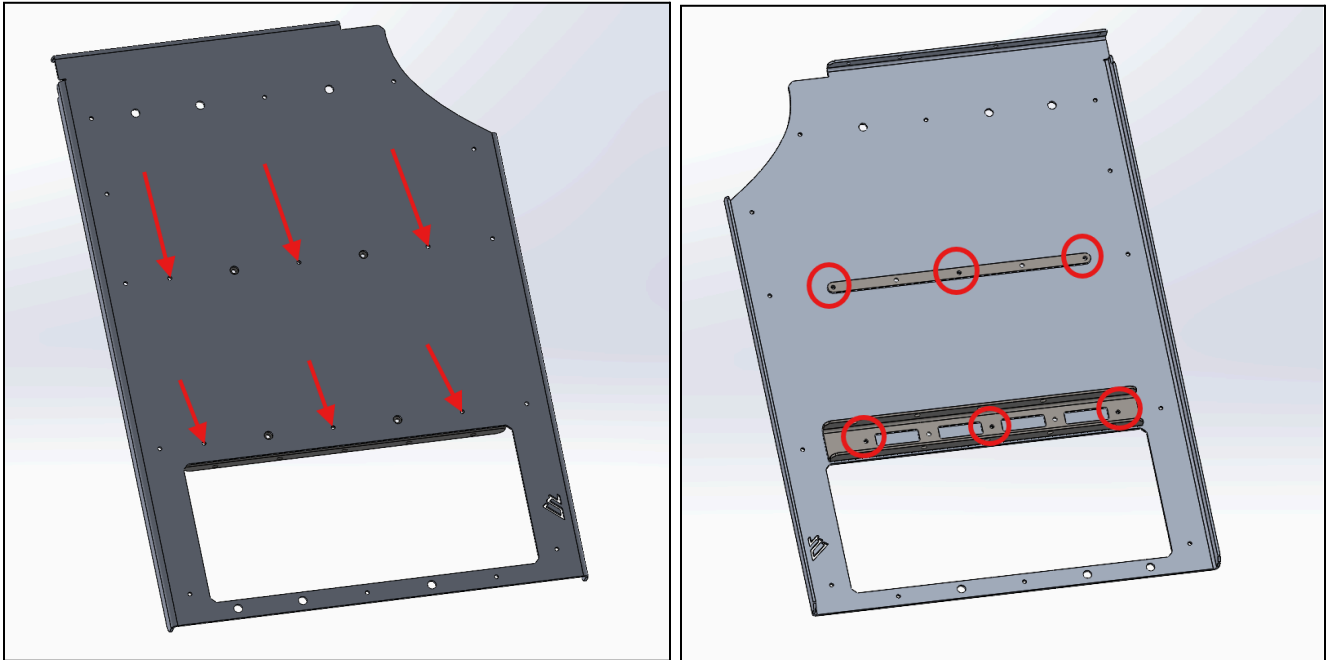


Do this on both sides of the rear of the front driver seat. Once these steps are complete, we can take a look at all of the parts and hardware required to begin assembly

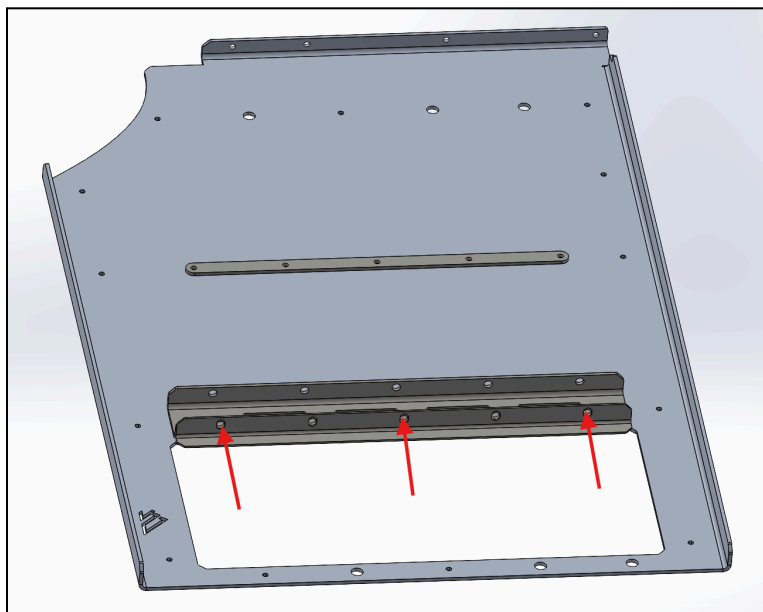
## **Step 1 - Attach Brackets to the Passenger Plate**

Using (6) Flat Head M6x8mm Bolts (No Nuts Necessary), attach the **Driver Support Rail**, and the **Front Driver Nut Plate** to the **Driver plate**:

Note: every hole designated for a countersunk bolt in the main panel has a hexagon shaped hole.



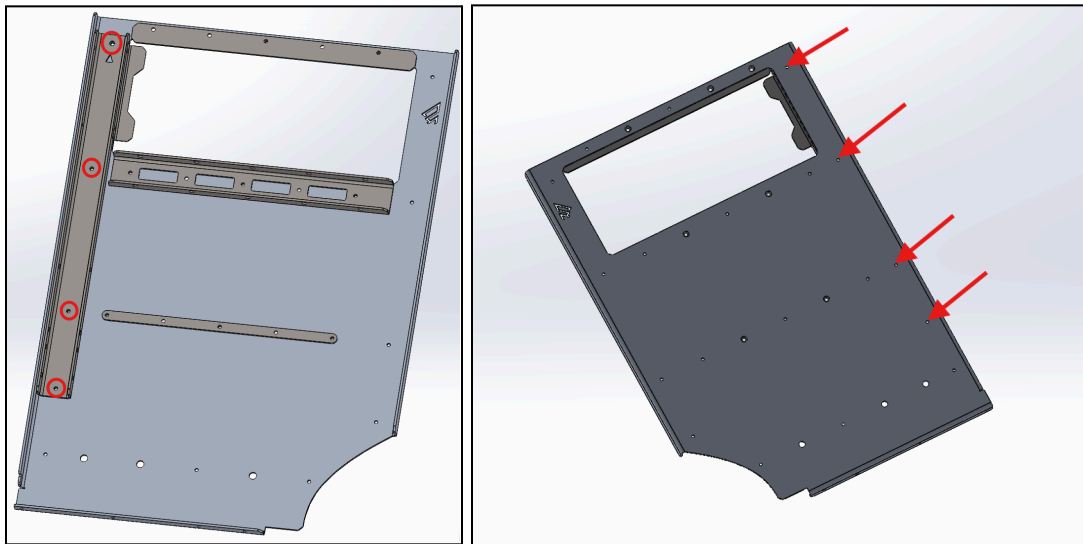
Using (3) Button Head M6x14mm Bolts and (3) Nylon Insert - M6 Hex Nuts, attach the **Rear Driver Access Door Bracket** to the **Passenger Support Rail**



Attach the **Access Door Bracket** to the **Support Rail** using **(2) Button Head M6x14mm Bolts** and **(2) Nylon Insert M6 Hex Nuts**

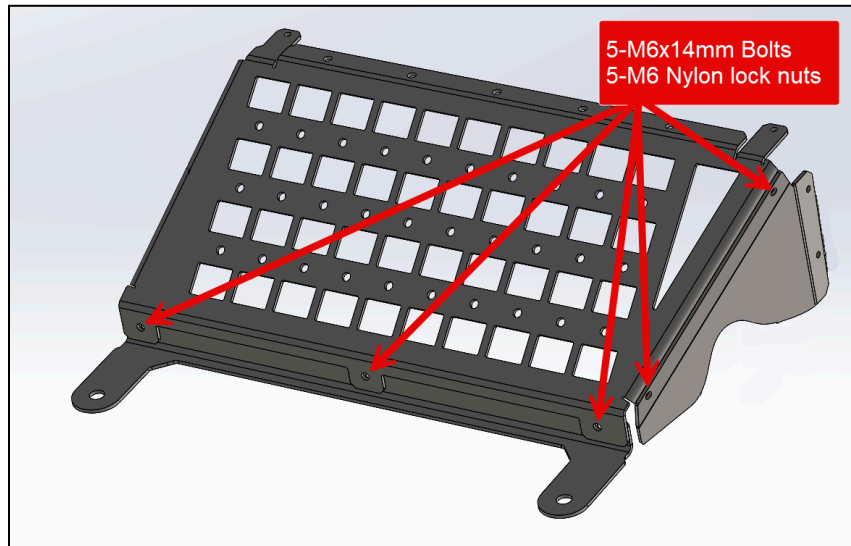


Using **(4) flat 6x14mm bolts**, secure the support rail into the **Driver Plate**.



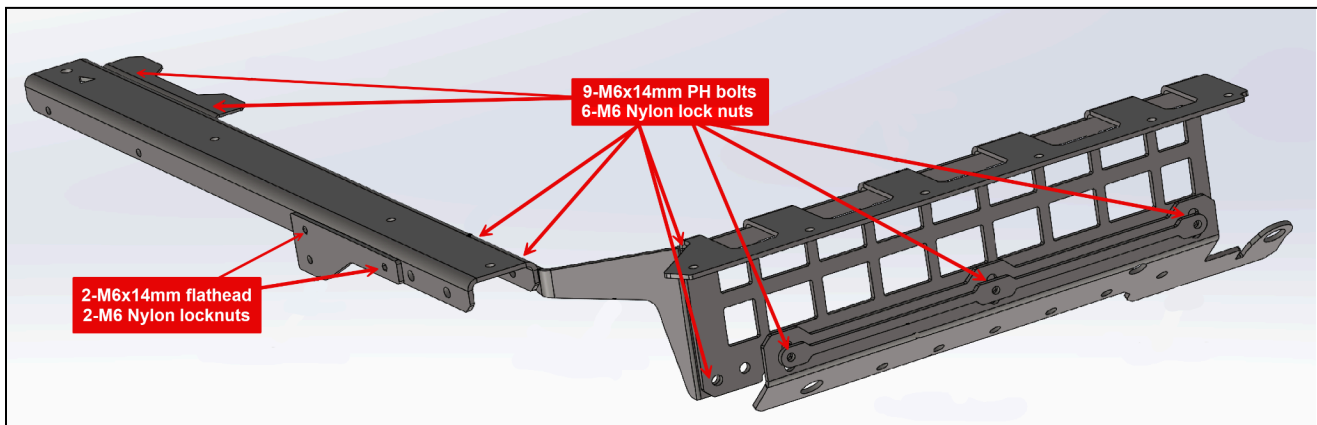
## **Step 2 - Construct the Platform perimeter pieces**

Using **(5) Button Head M6x14mm Bolts** and **(5) Nylon Insert M6 Hex Nuts**, attach the **Driver Side Panel Bracket Mount** and the **Lower Driver Bracket** to the **Front Driver Support**



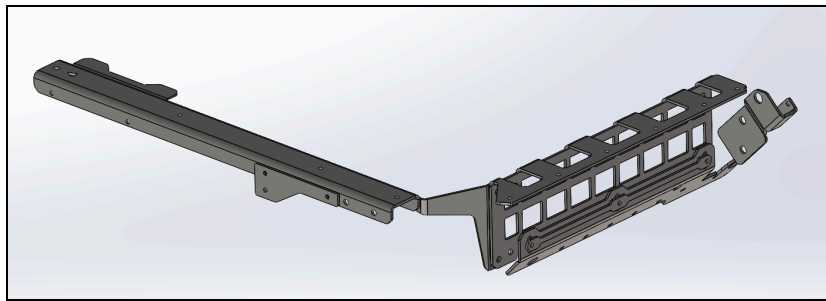
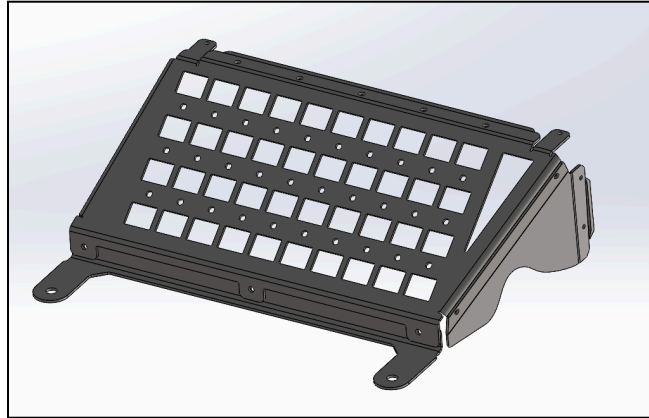
We'll then repeat a similar process to construct the rest of the perimeter. Using **(5) Button Head M6x14mm Bolts** and **(5) Nylon Insert M6 Hex Nuts**, attach the **Rear Driver Nut Plate**, **Rear Driver Bottom Bracket**, and **Driver Connector Bracket** to the **Rear Driver Upper Bracket**. This refers to the right side of the corner piece in the image below.

We'll then attach the **Rear Side Panel Bracket Magnet** to the **Support Rail** using **(2) Flat Head M6x14mm Bolts** and **(2) Nylon Insert M6 Hex Nuts** and **Access Door Bracket** to **Support Rail** using **(2) Button Head M6x14mm Bolts** and **(2) Nylon Insert M6 Hex Nuts**. This refers to the left side of the corner piece in the image below. Once this section is constructed, use **(2) Button Head M6x14mm Bolts** and **(2) Nylon Insert M6 Hex Nuts** to **attach this piece to the Driver Connector Bracket**. The total number of bolts and nuts used should add up to the numbers indicated in the image below.

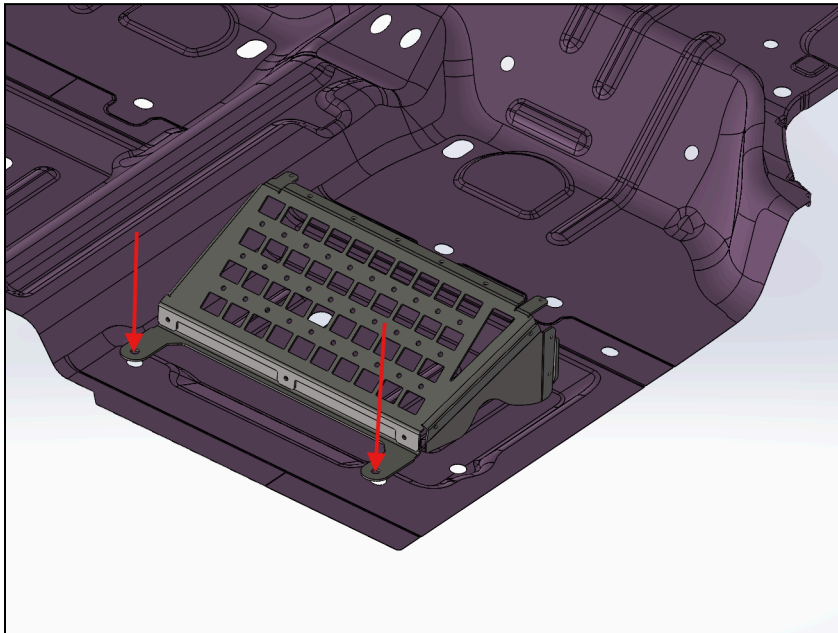


## **Step 3 - Install the perimeter pieces**

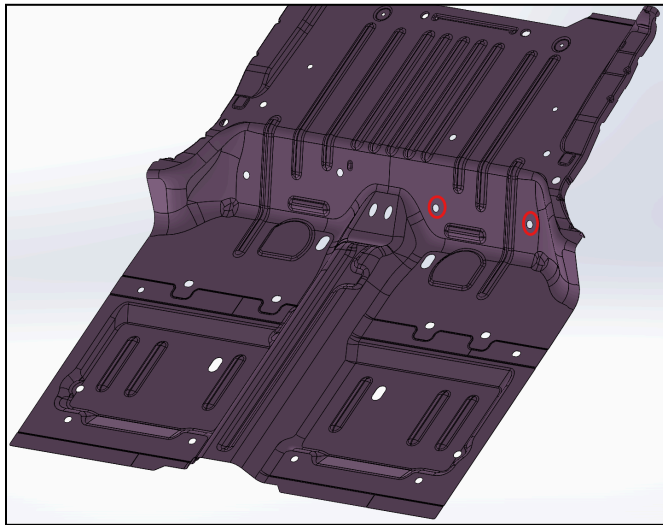
By Now you should have the following two pieces constructed:



First we will install the front passenger support piece we constructed. We begin by using **(2) M10x50mm Hex Head Bolts** and **(2) M10 Flat Washers** to secure the two tabs of the **Lower Driver Bracket** onto the passenger seat anchors. Recall that we placed the **(6) 12 mm inner - 28 mm outer Aluminum spacers** on these anchors in the preparatory steps of the assembly.

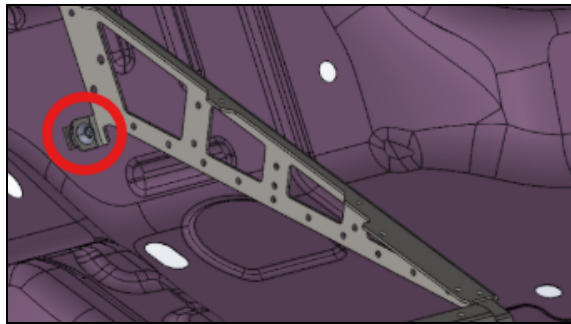


To attach the other frame piece, we need to locate the two holes located in the rear of the rear driver side seat here:

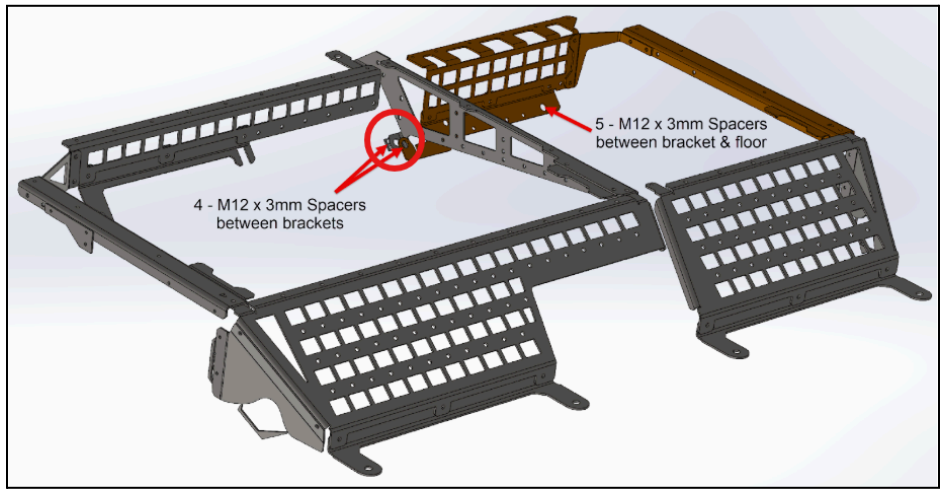


Once located, place **(4) 12mm inner - 28 outer Aluminum Spacers** on the left side hole and **(5) 12mm inner - 28 outer Aluminum Spacers** on the right side.

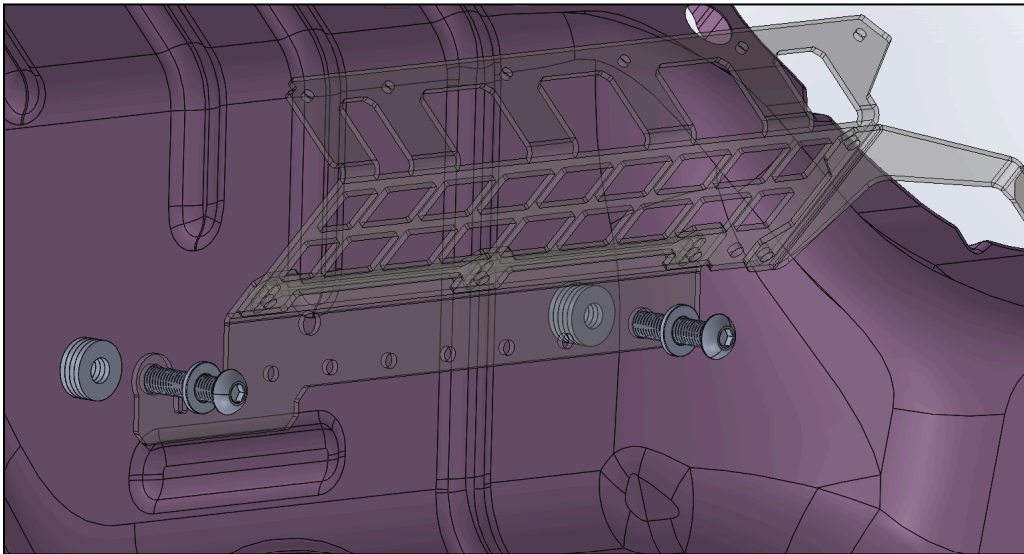
Note: if you already have a 60% seat delete installed, unscrew this M12 bolt.



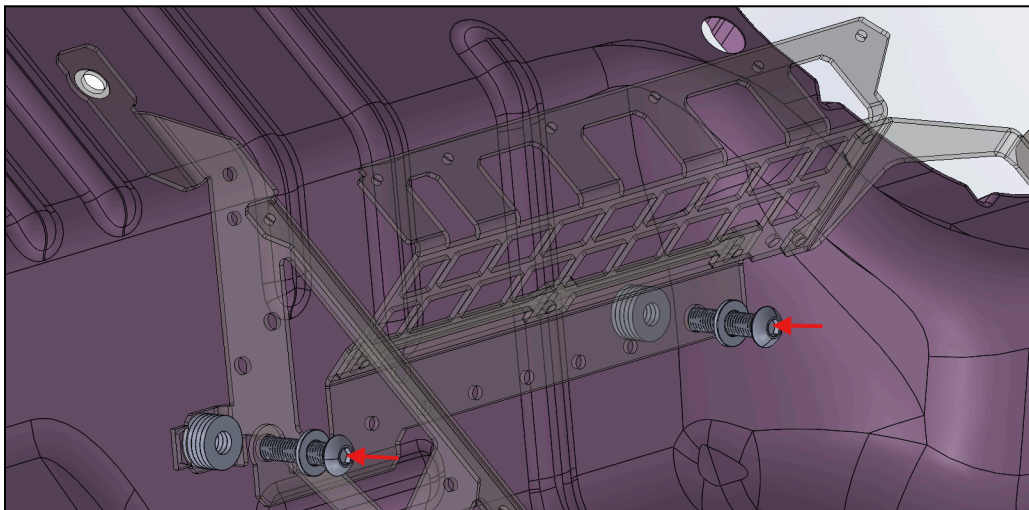
place the washers between the flange of the triangular Bracket flange and the bracket of the piece we are installing



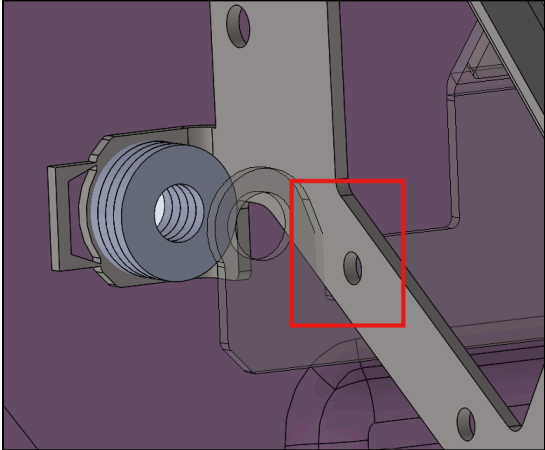
These holes will have **(2) M12x50 mm bolts** and **(2) M12 Washers** screwed in. Without a 60% previously installed, the installation should look like this:



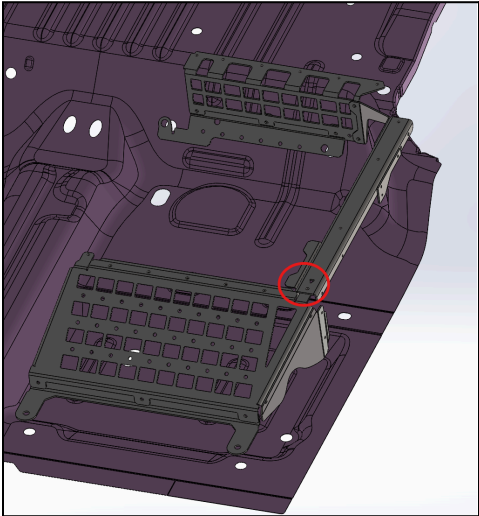
With a 60% previously installed, the installation should look like this:



The triangular bracket should fit into this slot

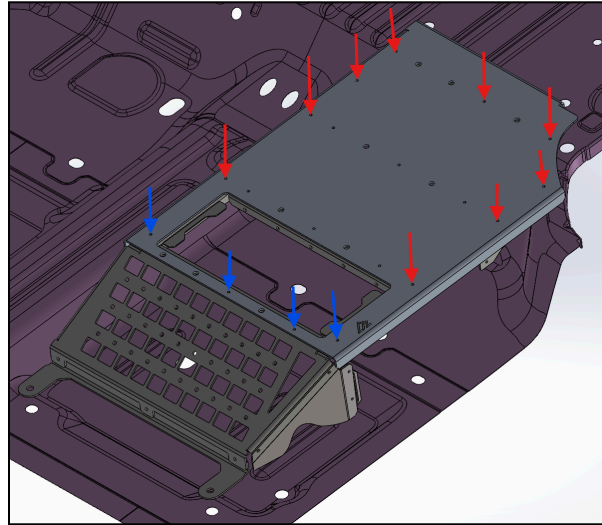


Make sure that on the front left corner of the frame that the flange of the driver support piece rests **below** the piece we just added.

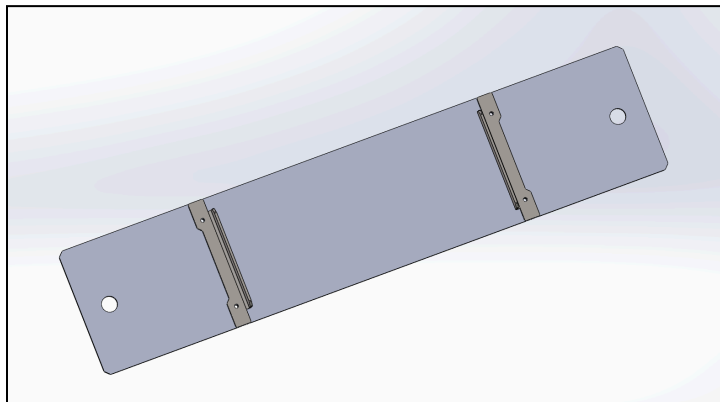
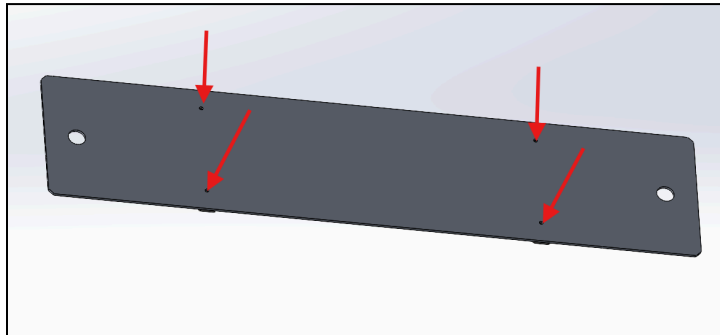


## **Step 4 - Install the plates**

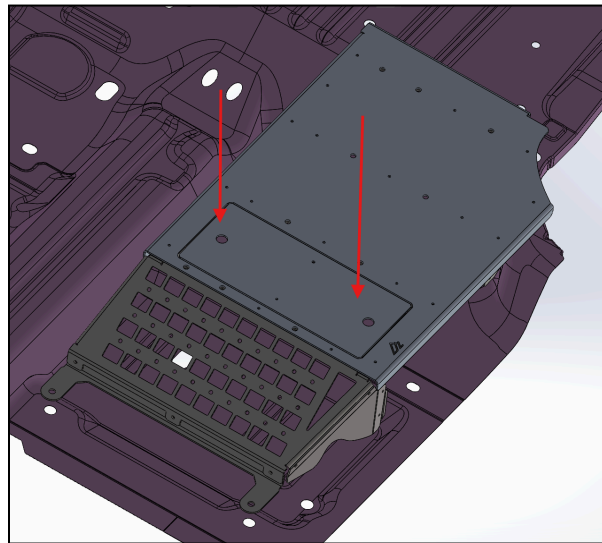
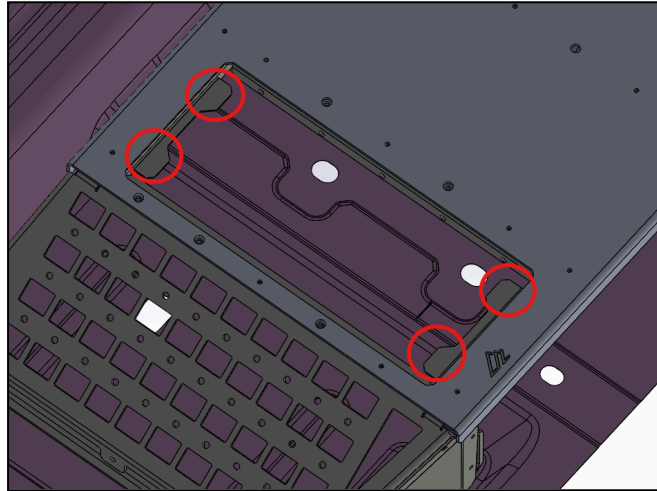
We're now on the home stretch! Now that the frame is set, we can install the **Driver Plate** Using **(9) Flat Head M6x14mm Bolts** and **(4) Flat Head M6x8mm Bolts (No nuts Required)**.



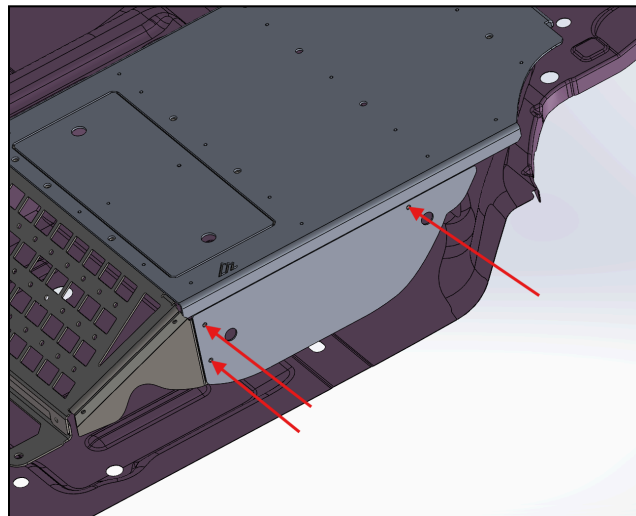
Now install the **Driver Access Door Braces** using **4 Flat Head M6x8mm Bolts (No Nuts Required)**



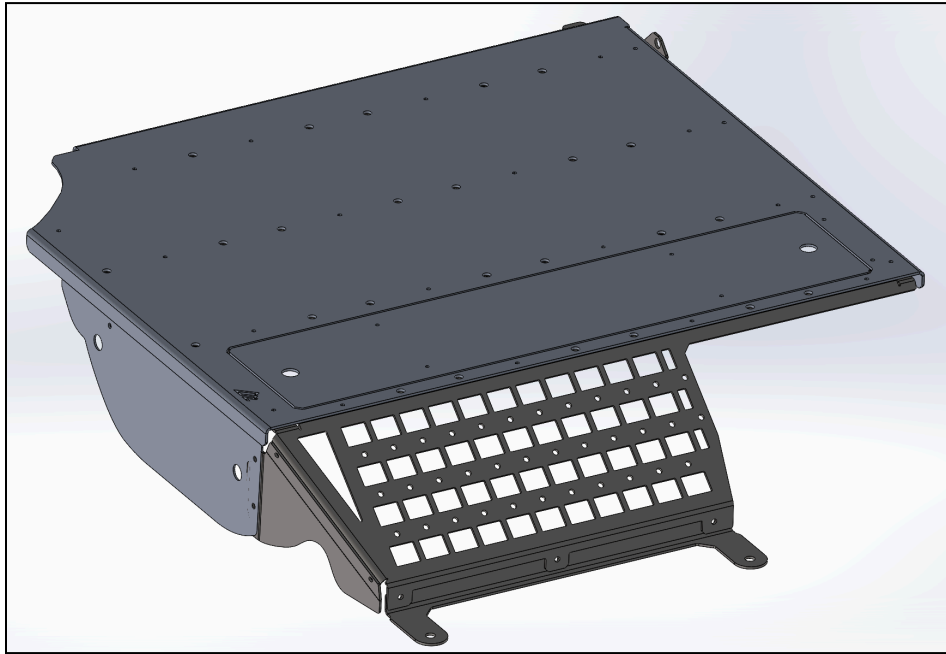
Once done, place each of the 4 3/4" - Round Magnets on the four spots shown below and simply set the Driver Access Door in its slot



Finally, attach the Driver Side Panel to the frame using 3 M6x14mm Thumb Screw Bolts



## **Your 40% rear seat delete is complete!**



### **Share Your Photos!**

We take great pride in building our products and we hope that pride extends to you after installing your Rear Seat Delete. If you are able to share your photos online (Facebook and Instagram), please tag **@AmericanAdventureLab**. We would love to see how it turned out and give you some reciprocal attention in return!

**Congrats! You're all done!**

**Thank you!**

**At American Adventure Lab, we strive to improve anywhere we can. If you experience any issues with this product or have any suggestions, please let us know.**

**If you have any questions or concerns, please don't hesitate to reach out to us at 385.202.4188 or via email at [Support@erp.adventurelab.com](mailto:Support@erp.adventurelab.com).**

